



REPUBLIC OF TURKEY

YAŞAR UNIVERSITY

Information Sheet on Emergency Instructions

All individuals (including staff members, students, visitors, interns, subcontractors' staff) are required to follow the instructions below during emergency.

- Use the nearest emergency exit once you hear the emergency alarm and announcement and head to the "Emergency Assembly Area" to scan your Yaşar University ID cards on the electronic card scanner brought by security guards for counting.
- Please avoid risking the safety during the evacuation and at the assembly areas.
- Properly line up at the emergency assembly areas to speed up the counting.
- Stay in order at the assembly areas until an evacuation is decided by the Emergency Coordinator.
- Each department is responsible for guiding its own subcontractors, interns, visitors, and students to head to the assembly area.
- If the announcement made after the emergency alarm has rung gives notice to evacuate the buildings or the evacuation has already been started once everyone has gathered at the assembly area, all staff members are required to immediately scan their Yaşar ID cards and exit the campus.

(If a person exits the campus without scanning Yaşar ID card, that person will still be listed as on-campus in the count list and search&rescue will also be undertaken for that person too. It is therefore compulsory for everyone to scan Yaşar ID cards to prevent such misunderstandings.)

Emergency Assembly Areas and Emergency Phone Numbers:

Selçuk Yaşar Campus Emergency Assembly Areas and Emergency Phone Numbers are as follows:

*Assembly Area No. 1: Front yard - the yard in front of the Rectorate Building (Building E)
(Only the Assembly Area No. 1 will be used during emergencies out of working hours.)

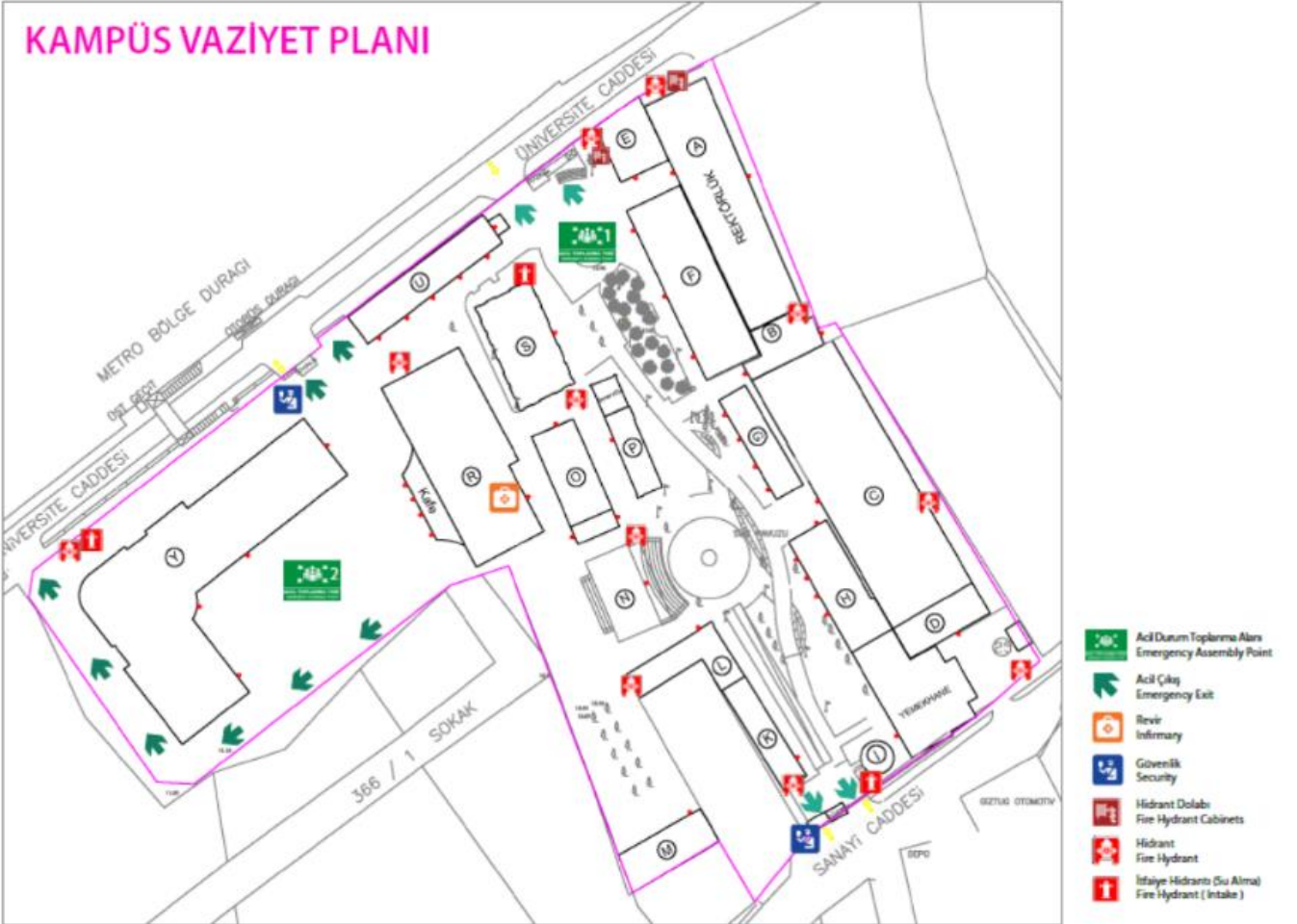
*Assembly Area No. 2: Open space in front of Building Y.





Security: 0 232 570 70 20

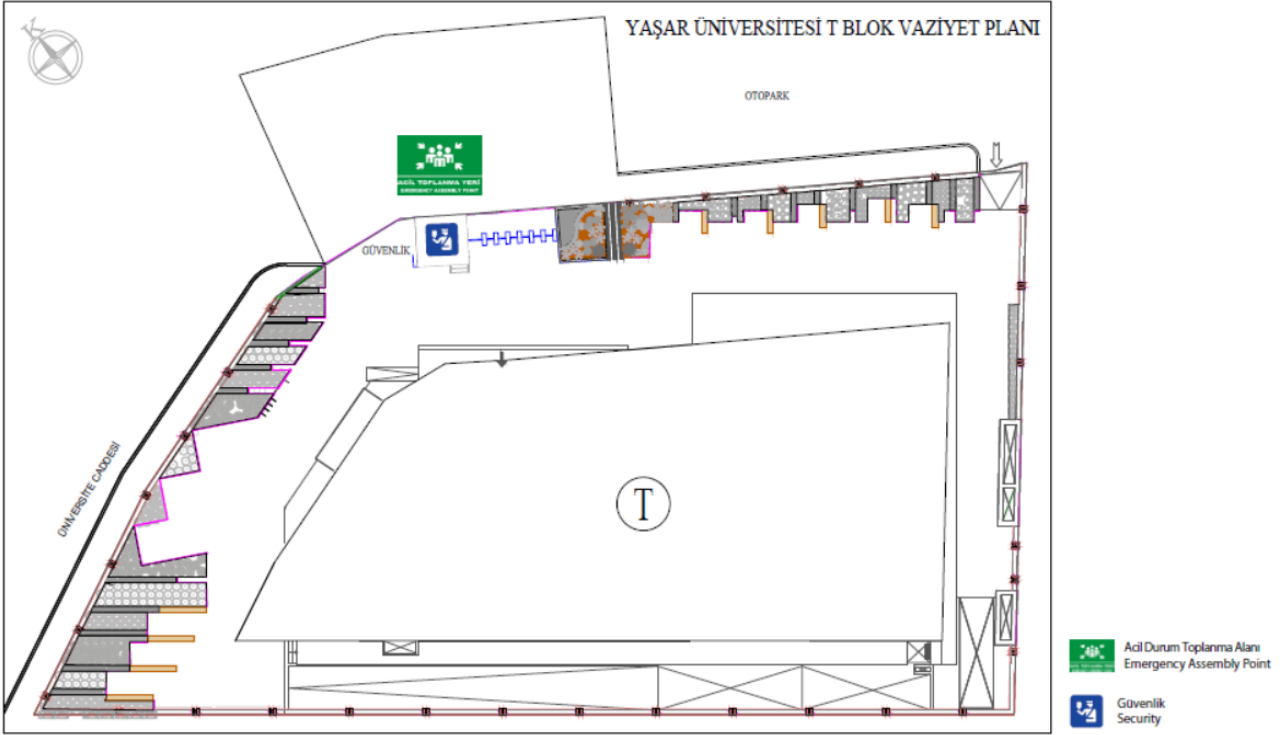


Infirmary: 0 232 570 75 31 – 0 232 570 75 32



Building T Emergency Assembly Area and Emergency Phone Numbers are as follows:
The Emergency Assembly Area for Building T is the area in front of the security building.

 Security: 0 232 570 70 26  Infirmary: 0 232 570 75 31 – 0 232 570 75 32



Student Residence Emergency Assembly Areas and Emergency Phone Numbers are as follows:
The Emergency Assembly Area for the Student Residence is the area in front of the security building.

 Security: 0 232 570 70 24  Infirmary: 0 232 570 75 31 – 0 232 570 75 32

